

Crisis Intervention

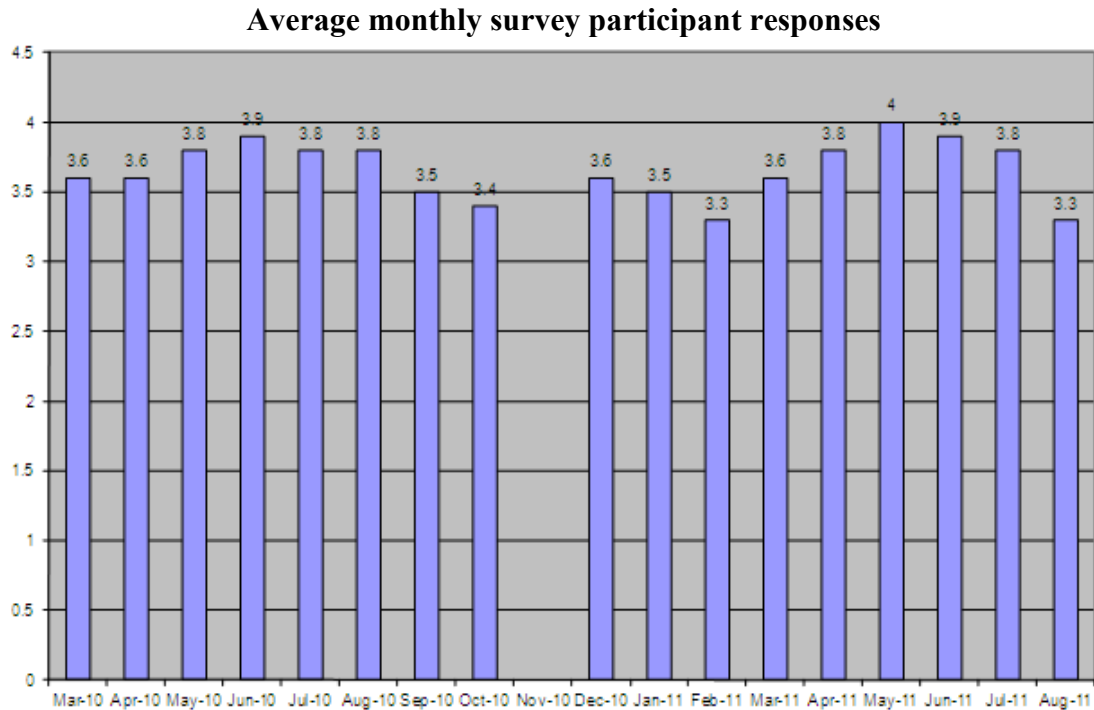
One of the services we provide to any and all Fairfield County residents is twenty-four hour mental health crisis intervention. Our team of clinicians is housed within the Fairfield Medical Center emergency department. Funding from the Fairfield County Alcohol, Drug Addiction and Mental Health (ADAMH) Board makes it possible for us to serve all persons, regardless of ability to pay for the care.

Crisis intervention is a crucial part of our mission to improve community health and well-being.

Last year we performed 1,080 crisis assessments – an average of 90 per month. We served people who were suicidal, who were at risk of harm to others, who were struggling with drug or alcohol dependence, who were on the verge of losing hope.

Please see our client experience data below:

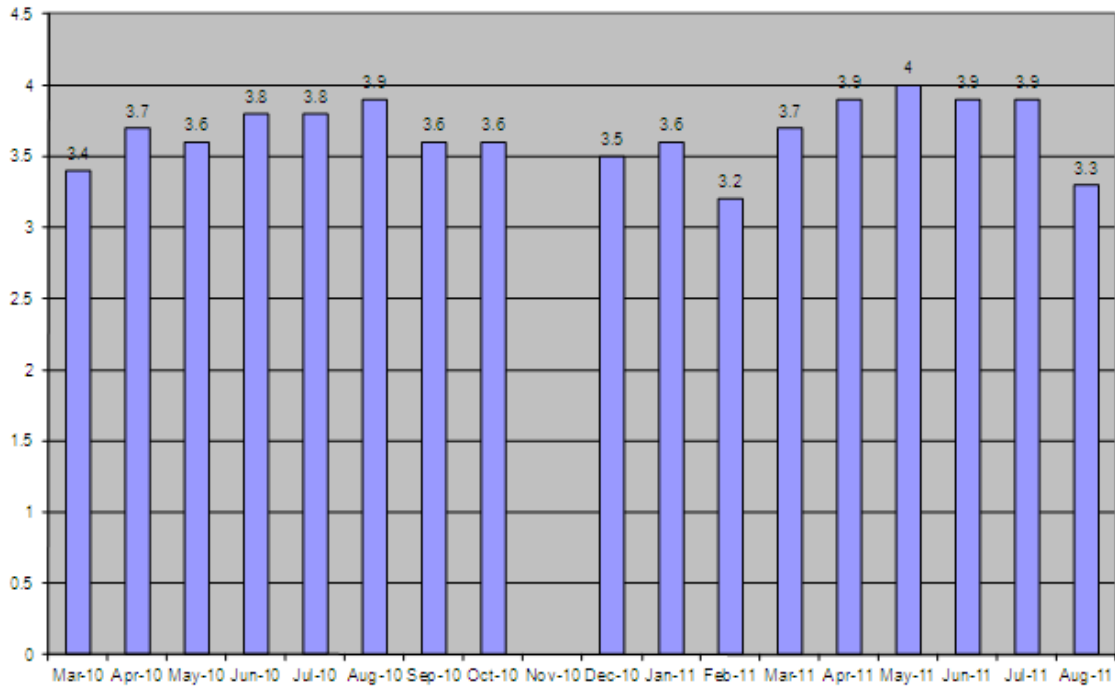
Rate the overall satisfaction with the treatment and services you received from the crisis intervention staff.



Rating scale: 1-very disappointed; 2-disappointed; 3-satisfied; 4-very satisfied

How likely would you be to recommend New Horizons crisis intervention services?

Average monthly survey participant responses



Rating scale: 1-very disappointed; 2-disappointed; 3-satisfied; 4-very satisfied